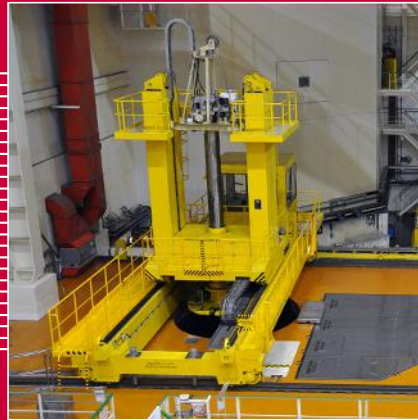
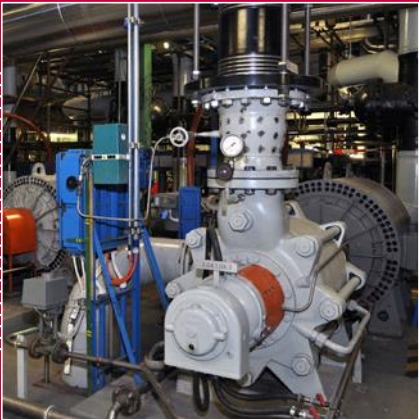


I&C Energo a.s.

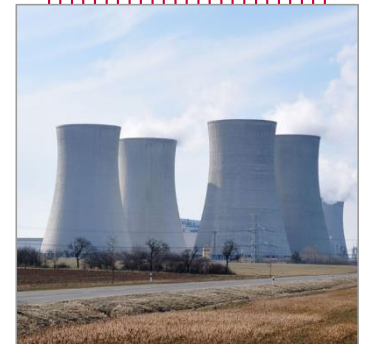
New Unit Construction

Knowledge and Skills Maintaining and Development

11th Annual Conference on Nuclear Energy, Prague



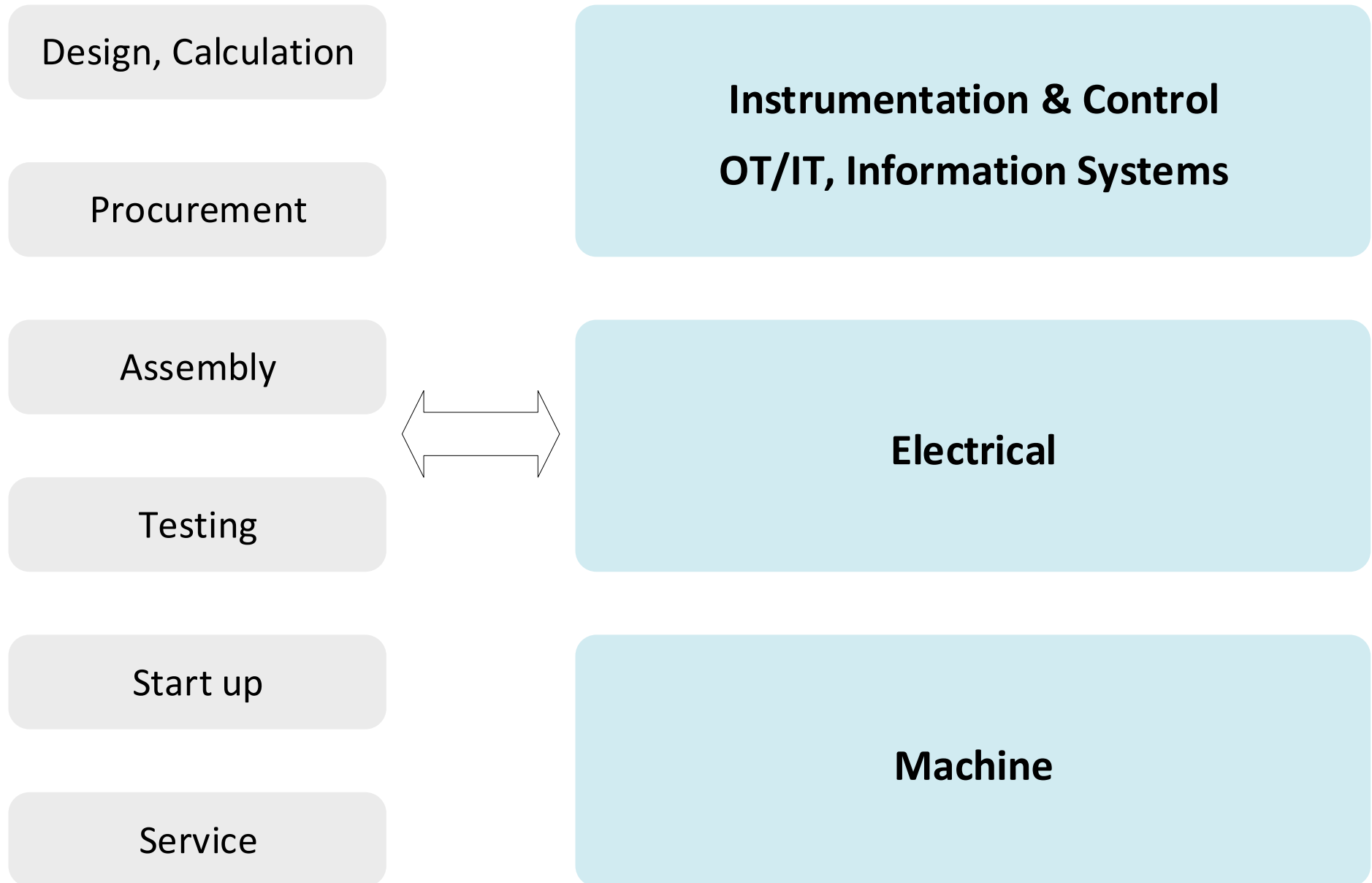
- **Company Data**
- **Nuclear Power Plants – Engineering and Procurement**
- **Projects in the Cooperation with ZAT Company**
- **Product Development (Examples)**

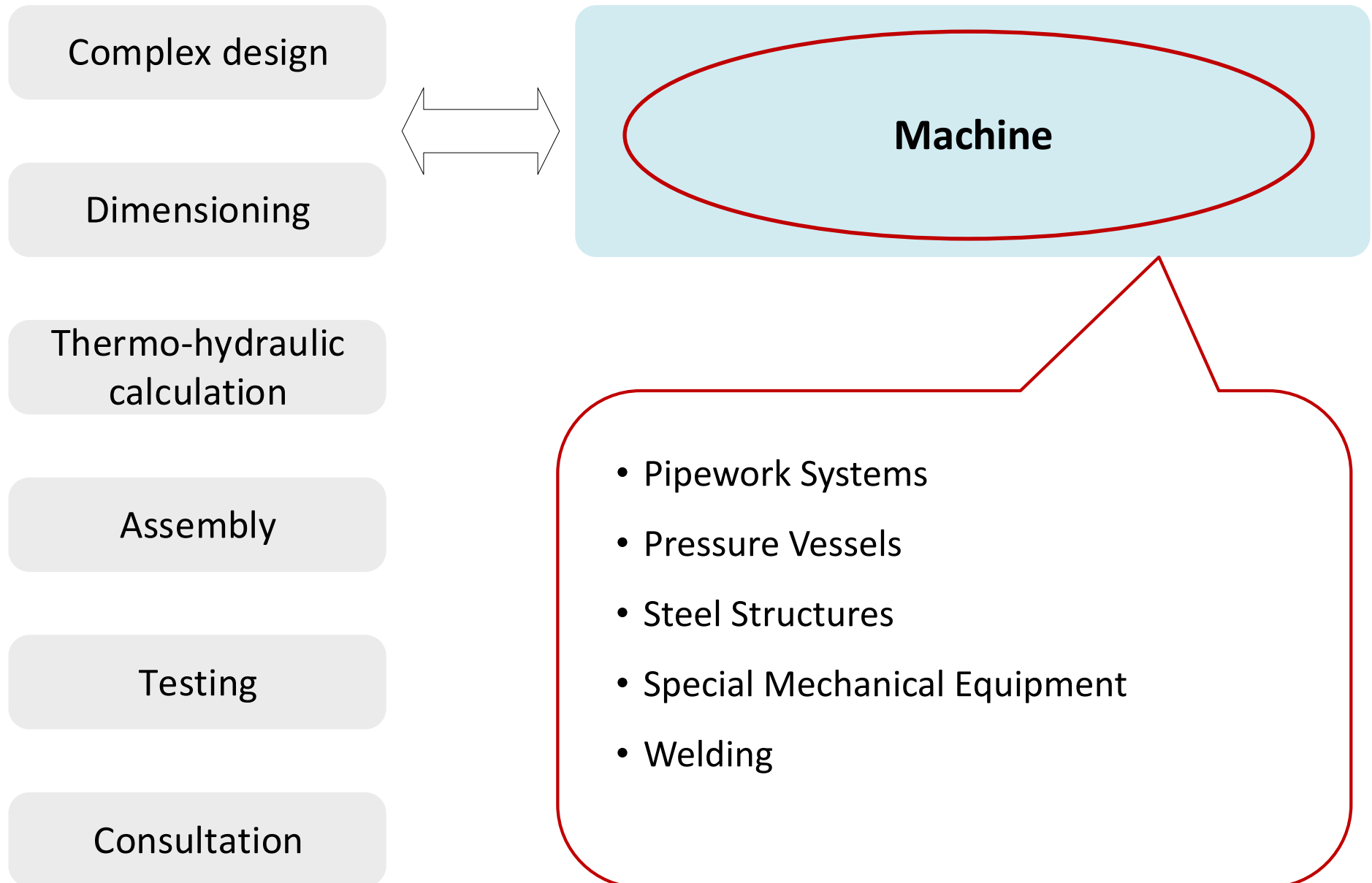


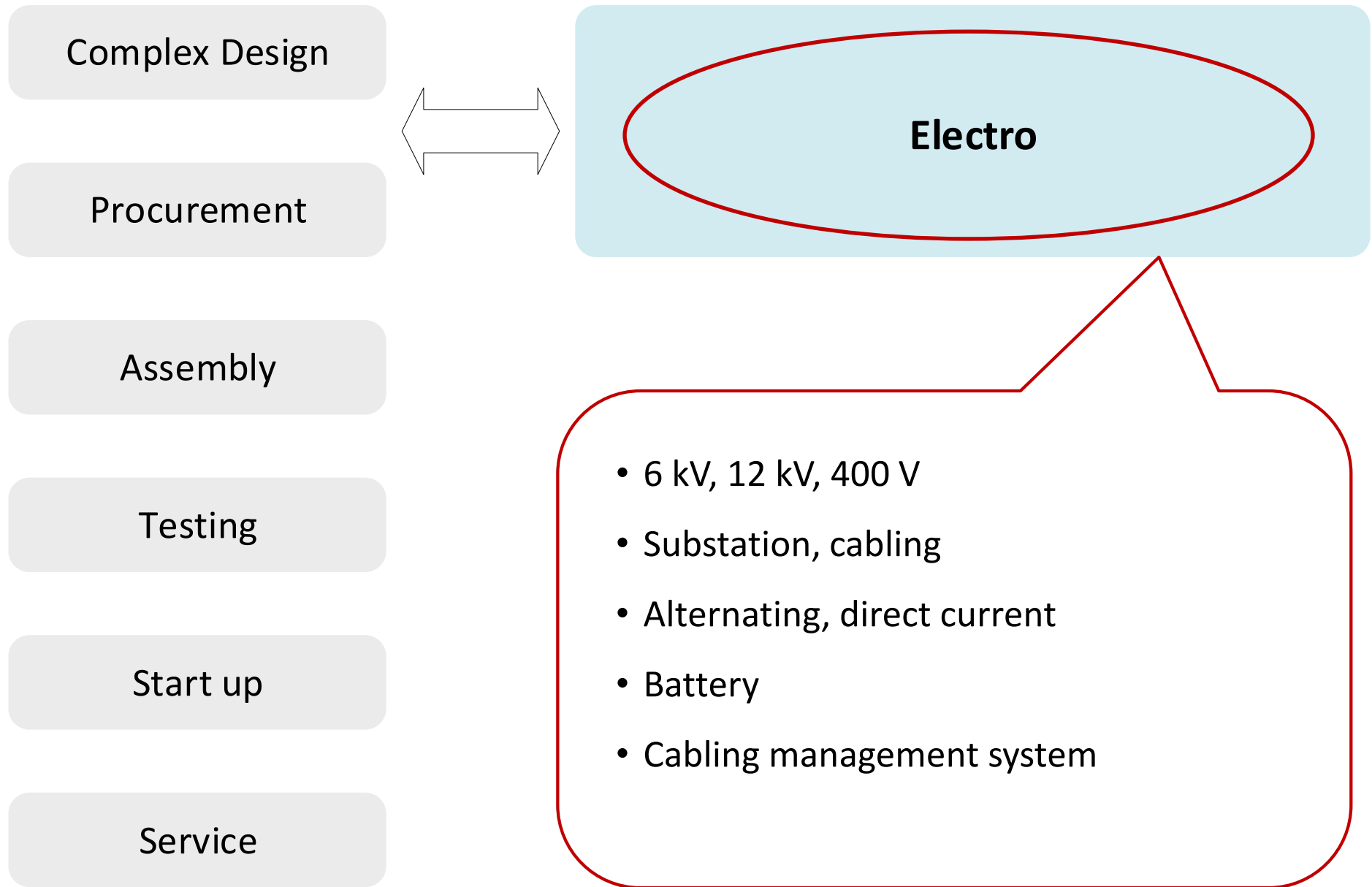
COMPANY DATA

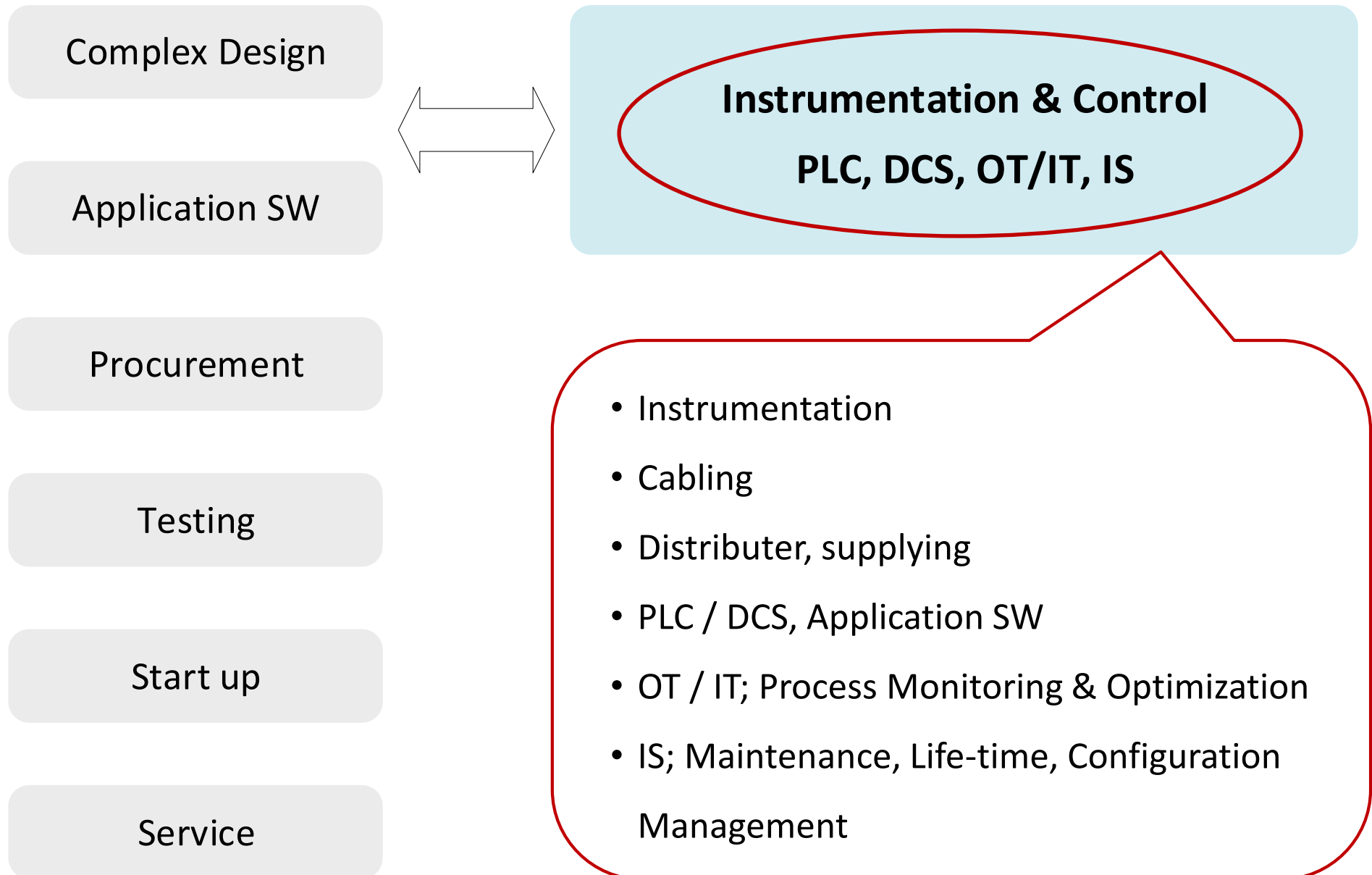
- **YEAR OF INCEPTION: 1993**
 - **COMPANY OWNER PI 1 a.s. (100 %)**
 - **900 COMPANY EMPLOYERS (73 % university or high degree)**
 - **VALUE OF REGISTERED CAPITAL 150 000 000.- CZK**
 - **CERTIFICATION (ISO 9001, ISO 14001, ČSN OHSAS 18001)**

 - **ENGINEERING COMPANY**
 - Engineering + Procurement + Service
- In the fields** (power engineering – thermal power plant; nuclear, fossil)
- Instrumentation & Control
 - Electrical
 - Machine
 - Building Technologies

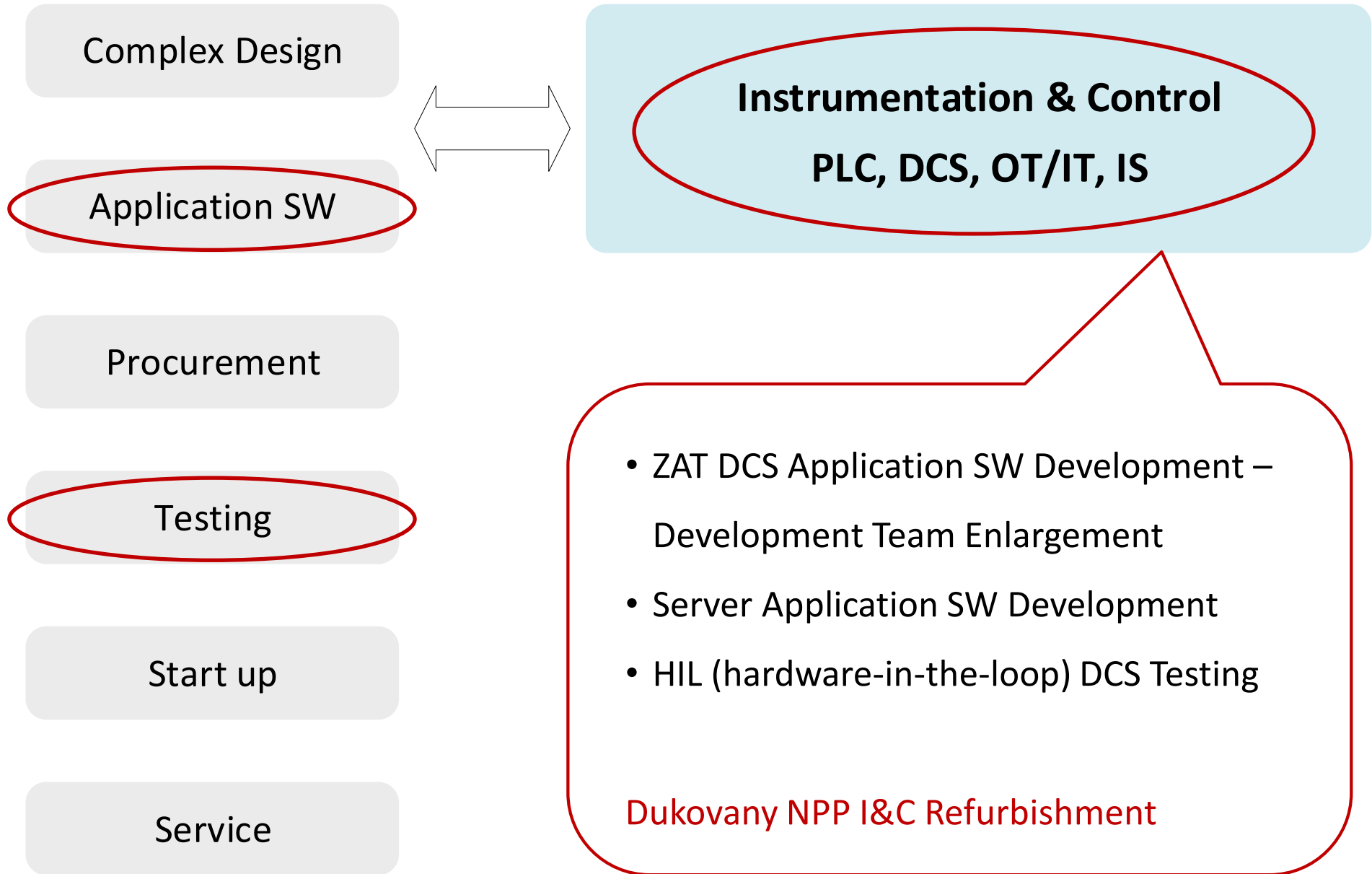


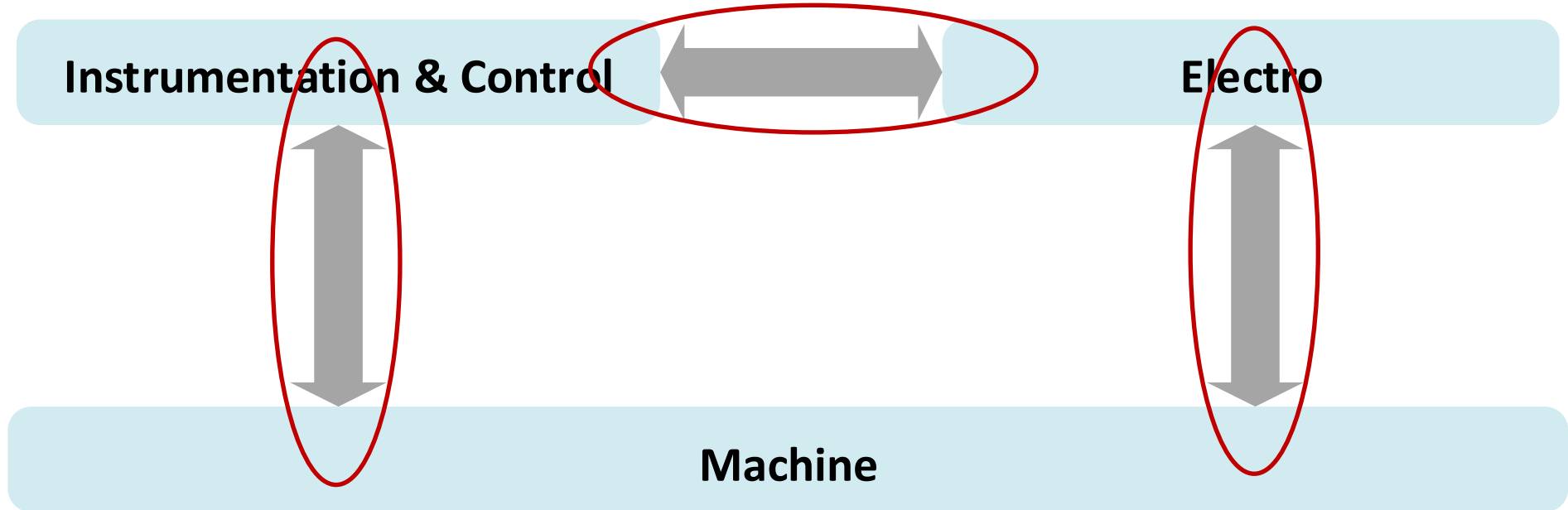






PROJECT IN COOPERATION WITH ZAT COMPANY





Cable Placement in space (thousand cables)

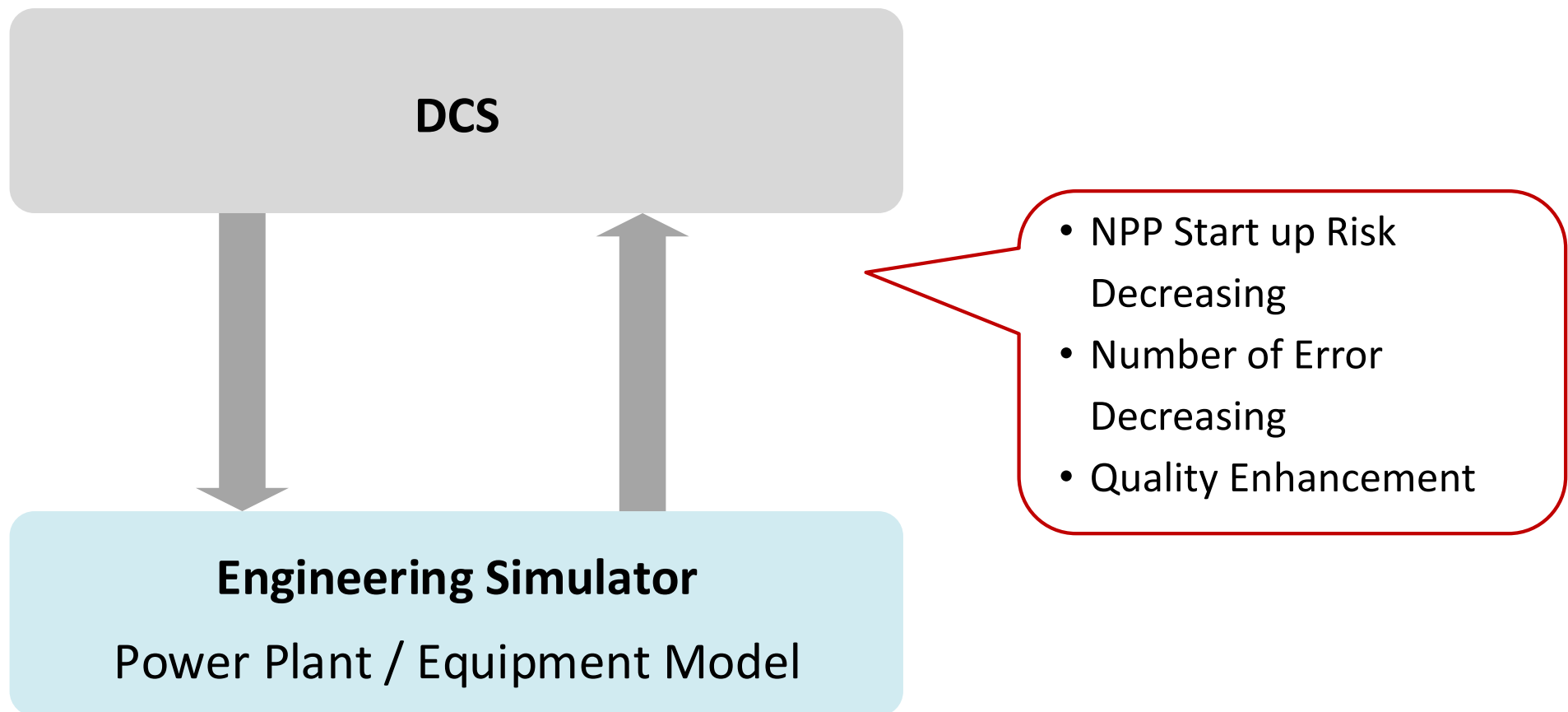
(Energy Cables, Information Cables)

- Regulation Compliance = Cables Needs Specific Condition of Environment
- Regulation Compliance = Overload Environment
- Regulation Compliance = Other Cables Influencing
- Methods= > SEPARATION, SEGREGATION

ANALYSES

NPP START UP SUPPORT

HIL (HARDWARE-IN-THE-LOOP), see below



PRODUCT DEVELOPMENT WITH HIGH ADDED VALUE POWER PLANT CONFIGURATION MANAGEMENT

WITH AVEVA COMPANY COOPERATION

CONFIGURABLE, OPEN AND SCALABLE PLATFORM FOR CONFIGURATION MANAGEMENT:

- Project Data Management
- Requirement and Rules Management
- Complex Coordination of All Data



- Link Management
- Inconsistency Elimination
- Number of Errors Decreasing
- Quality Enhancement
- Productivity Enhancement

PROOFS:

- Long-term stable company
- Significant participation on projects of renewal and life extension of NPP in Czech Republic and Slovakia
- Continuous development of products with high added value
- Significant participation on reconstruction and construction of new NPP and coal power plants



SPOLEHLIVÉ
PARTNERSTVÍ
OD ROKU 1993

Thank you for Attention

Ing. Jiří Pliska

T +420 602 723 934

E jpliska@ic-energo.eu

adresa: Pražská 684/49, 674 00 Třebíč